



E. GREENWICH AVENUE

Maintain 2 Travel Lanes of Traffic in Each Direction on Route 2 SB "Lane Shift"

Construct Portion of the On-Ramp to I-95 SB

No Traffic Impact on Loop Ramp to I-95 SB

No Traffic Impact on I-95 SB Off-Ramp

QUAKER LANE



**R.I.
2**

No Traffic Impact on I-95 NB & SB

PHASE 1

E. GREENWICH AVENUE

Maintain 2 Travel Lanes of Traffic in Each Direction on Route 2 NB & SB "Lane Shift"

Widen On-Ramp to I-95 SB

Modify Existing Signal System for New Lane Configuration

Complete On-Ramp to I-95 SB

No Traffic Impact on Loop Ramp to I-95 SB



Maintain 1 Travel Lane on Off-Ramp "Lane Shift"

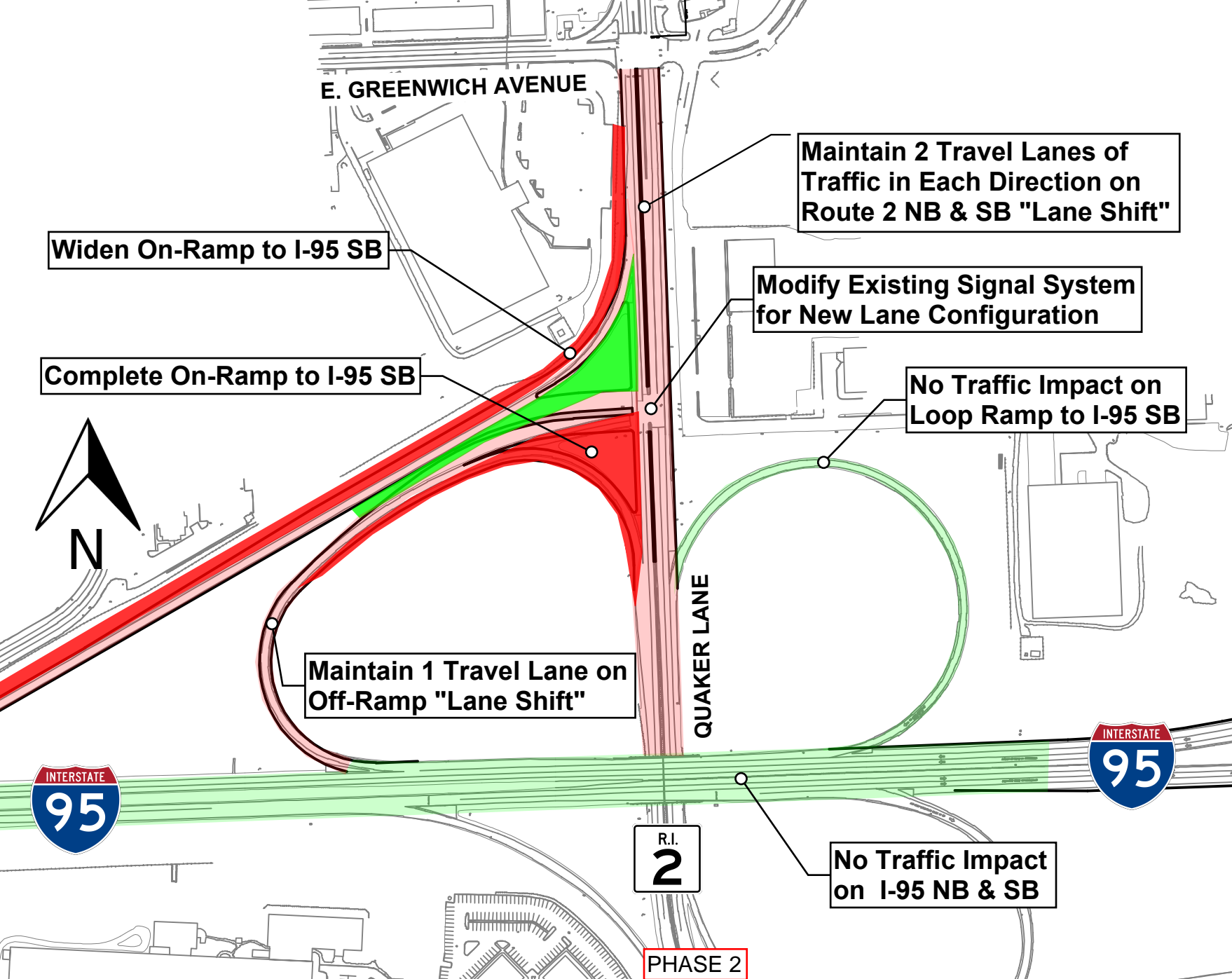
QUAKER LANE



R.I.
2

No Traffic Impact on I-95 NB & SB

PHASE 2



E. GREENWICH AVENUE



New On-Ramp Open to Traffic

Maintain 2 Travel Lanes of Traffic in on Route 2 NB "Lane Shift"

Remove Loop Ramp & Construct Water Quality System

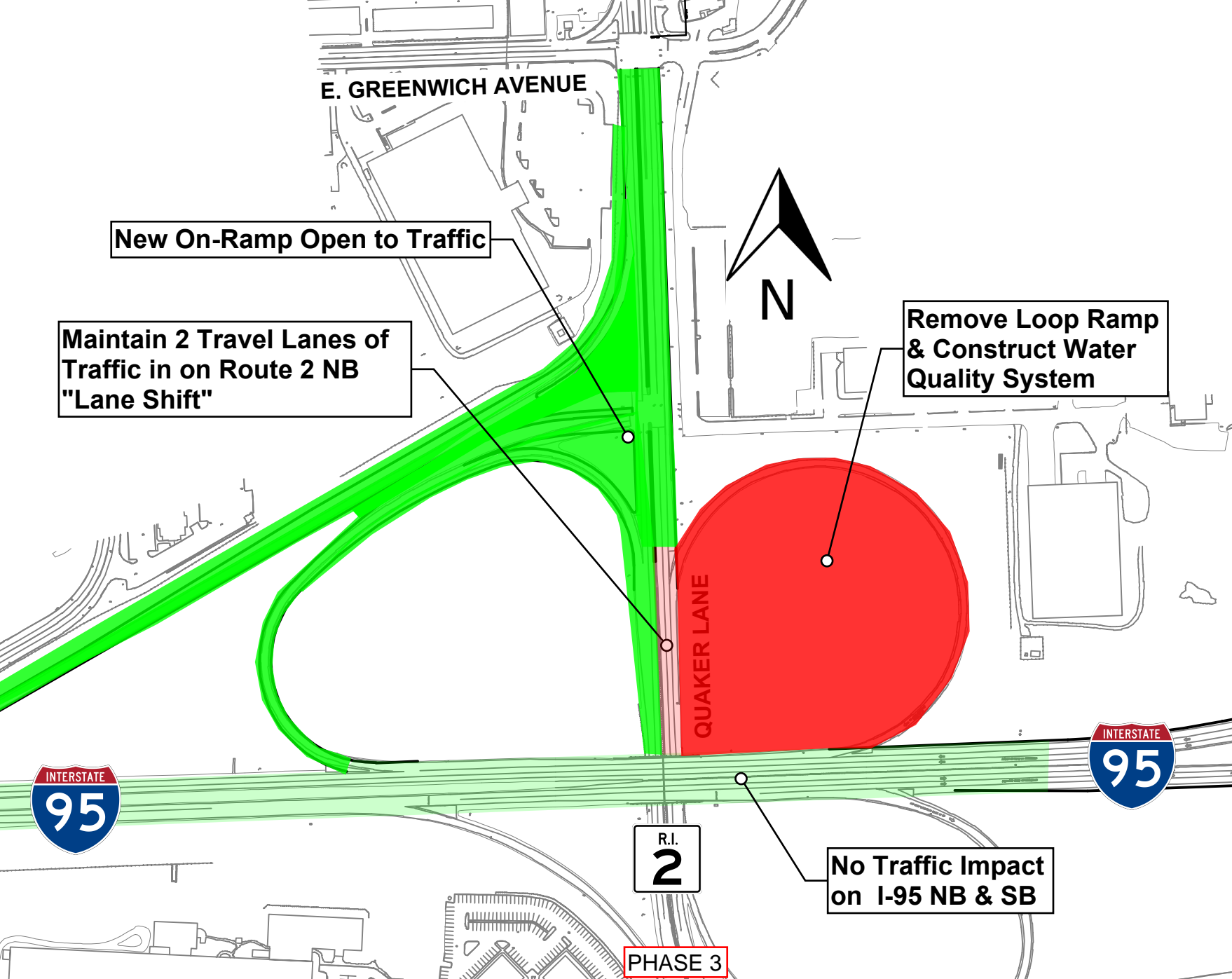
QUAKER LANE



R.I.
2

No Traffic Impact on I-95 NB & SB

PHASE 3





Maintain 4 Travel Lanes of Traffic on I-95 SB "Lane Shift"

Maintain 5 Travel Lanes of Traffic at I-95 SB/Route 4 SB Split "Lane Shift"

Construct Portion of New I-95 SB

New Superstructure

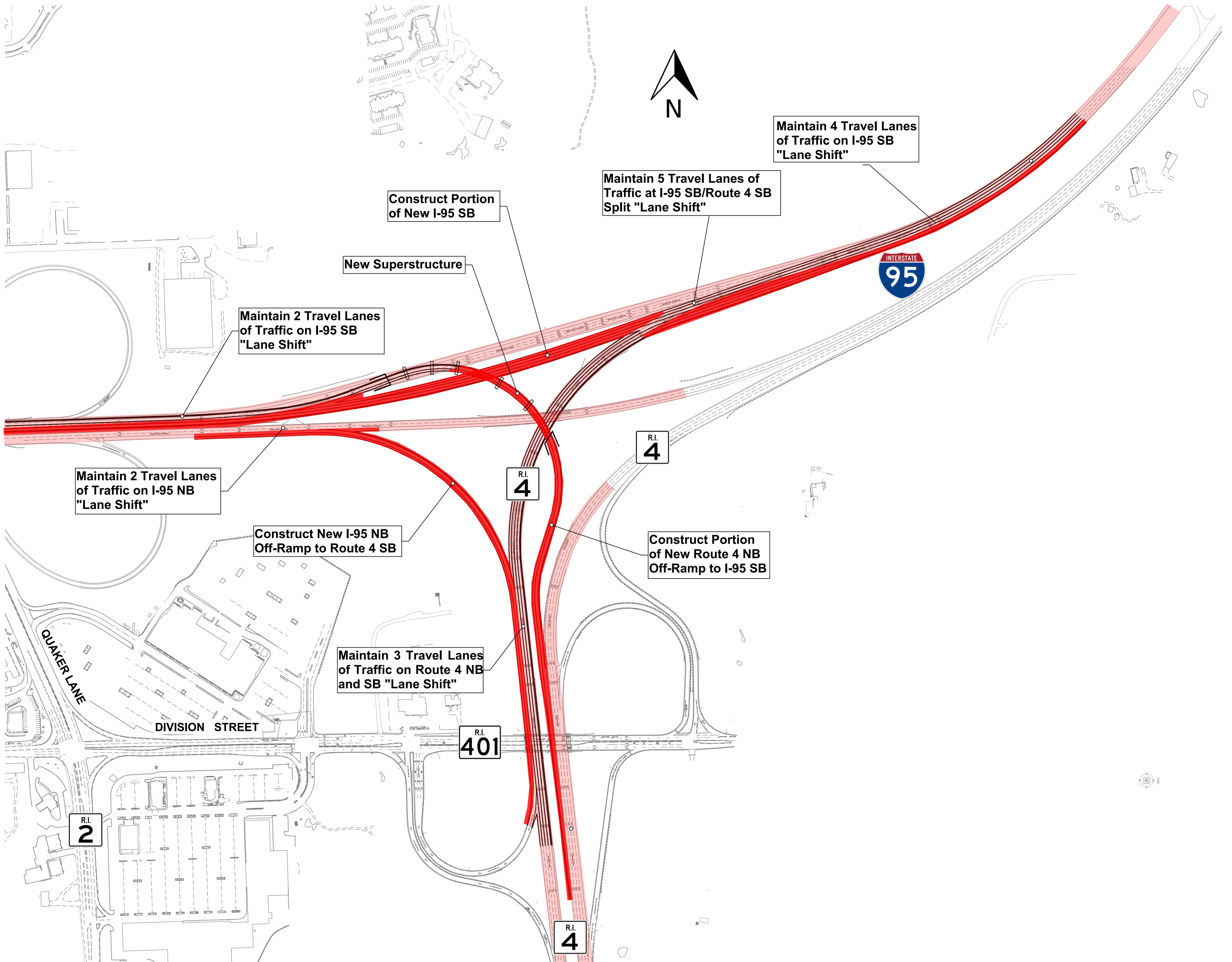
Maintain 2 Travel Lanes of Traffic on I-95 SB "Lane Shift"

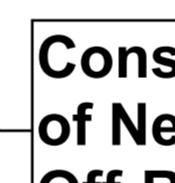
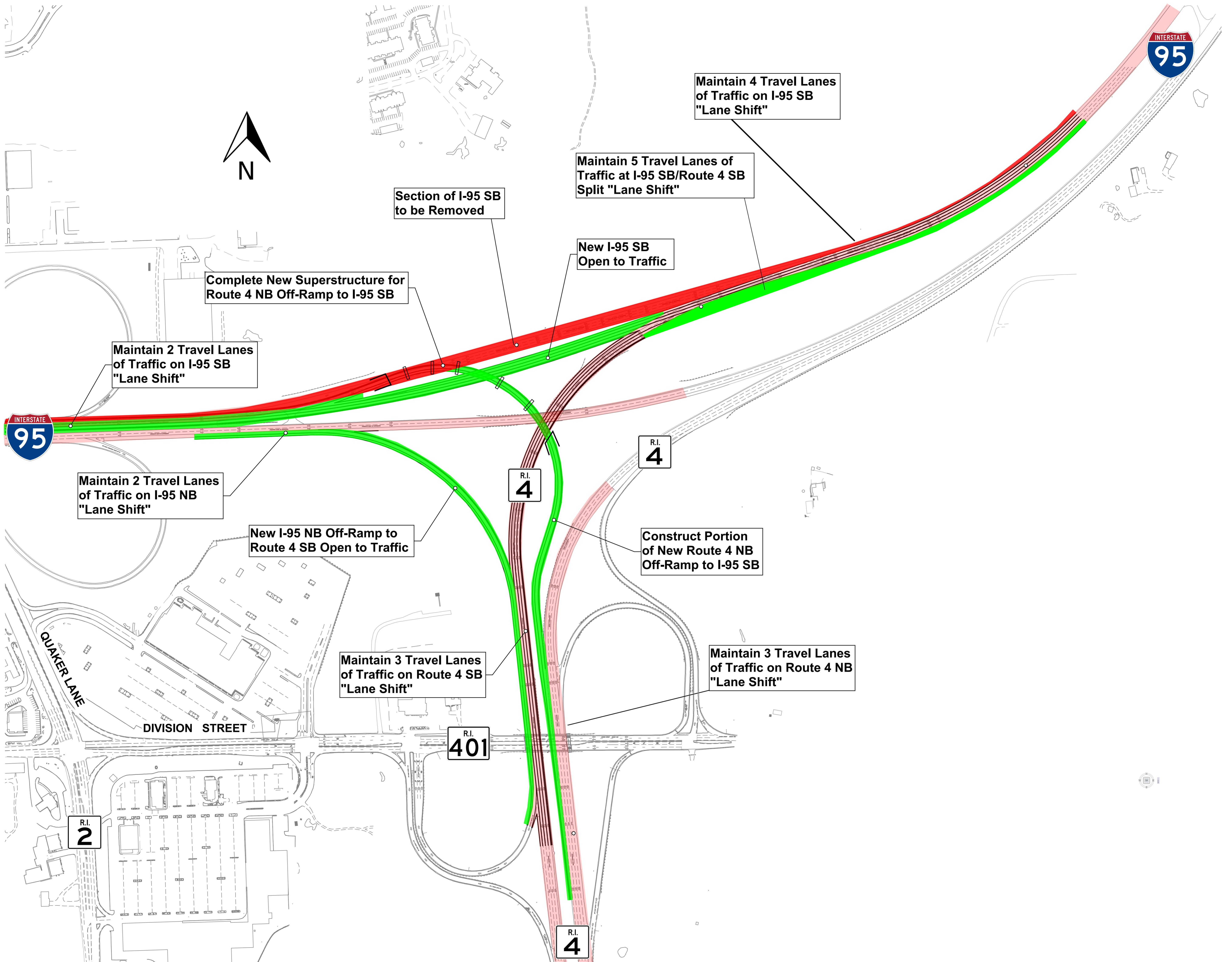
Maintain 2 Travel Lanes of Traffic on I-95 NB "Lane Shift"

Construct New I-95 NB Off-Ramp to Route 4 SB

Construct Portion of New Route 4 NB Off-Ramp to I-95 SB

Maintain 3 Travel Lanes of Traffic on Route 4 NB and SB "Lane Shift"





Maintain 4 Travel Lanes of Traffic on I-95 SB "Lane Shift"

Maintain 5 Travel Lanes of Traffic at I-95 SB/Route 4 SB Split "Lane Shift"

Section of I-95 SB to be Removed

New I-95 SB Open to Traffic

Complete New Superstructure for Route 4 NB Off-Ramp to I-95 SB

Maintain 2 Travel Lanes of Traffic on I-95 SB "Lane Shift"

Maintain 2 Travel Lanes of Traffic on I-95 NB "Lane Shift"

New I-95 NB Off-Ramp to Route 4 SB Open to Traffic

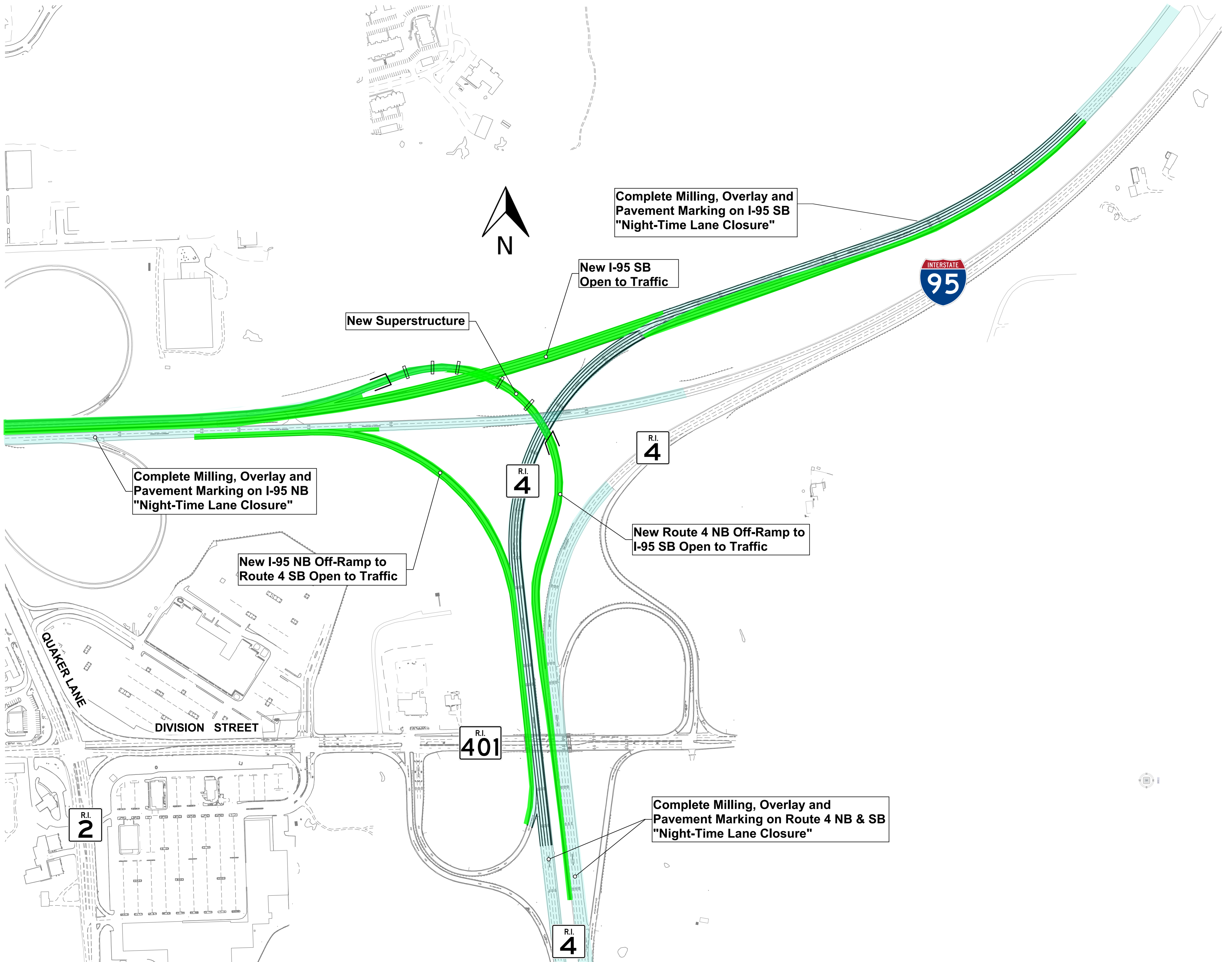
Construct Portion of New Route 4 NB Off-Ramp to I-95 SB

Maintain 3 Travel Lanes of Traffic on Route 4 SB "Lane Shift"

Maintain 3 Travel Lanes of Traffic on Route 4 NB "Lane Shift"

QUAKER LANE

DIVISION STREET



Complete Milling, Overlay and Pavement Marking on I-95 SB "Night-Time Lane Closure"

New I-95 SB Open to Traffic

New Superstructure

Complete Milling, Overlay and Pavement Marking on I-95 NB "Night-Time Lane Closure"

New I-95 NB Off-Ramp to Route 4 SB Open to Traffic

New Route 4 NB Off-Ramp to I-95 SB Open to Traffic

Complete Milling, Overlay and Pavement Marking on Route 4 NB & SB "Night-Time Lane Closure"



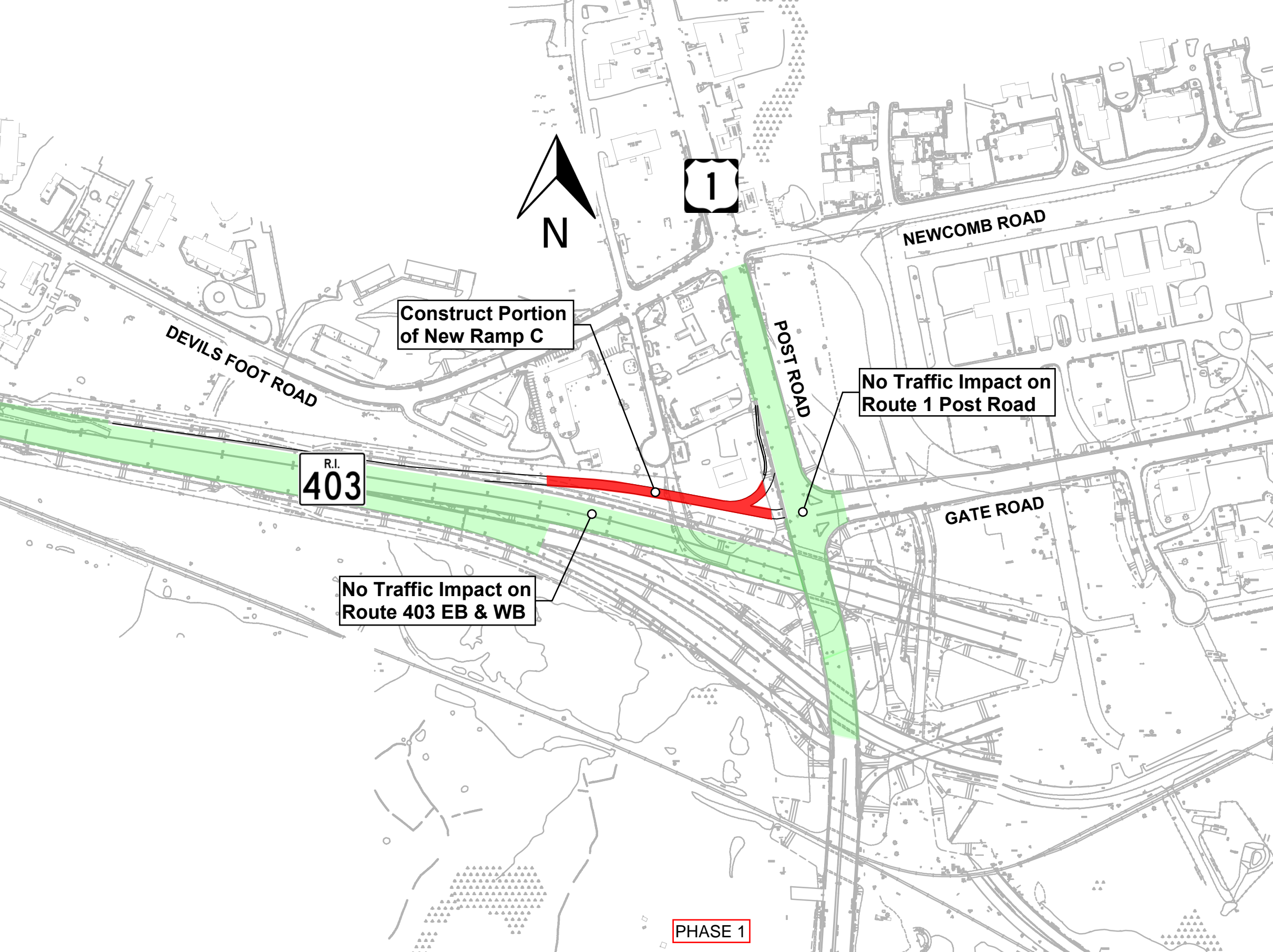
QUAKER LANE

DIVISION STREET

R.I. 401

R.I. 2

R.I. 4



NEWCOMB ROAD

DEVILS FOOT ROAD

Construct Portion
of New Ramp C

POST ROAD

No Traffic Impact on
Route 1 Post Road

R.I.
403

No Traffic Impact on
Route 403 EB & WB

GATE ROAD

PHASE 1



Complete New Ramp C & Tie-in with Route 1 SB

Complete New Ramp C & Tie-in with Route 403 WB

Maintain 2 Travel Lanes of Traffic in Each Direction on Route 1 Post Road NB & SB "Lane Shift"

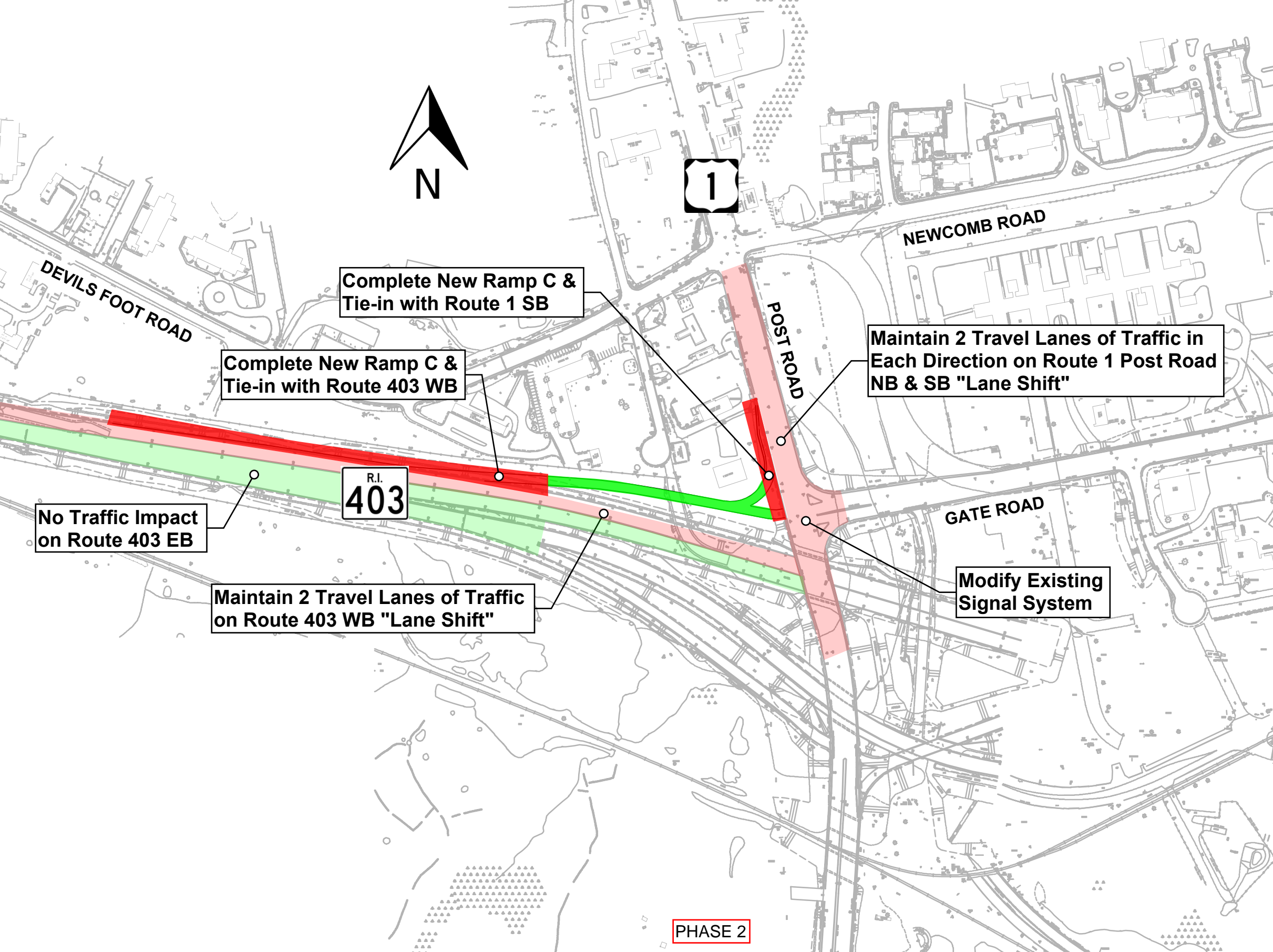
No Traffic Impact on Route 403 EB

R.I.
403

Maintain 2 Travel Lanes of Traffic on Route 403 WB "Lane Shift"

Modify Existing Signal System

PHASE 2





NEWCOMB ROAD

DEVILS FOOT ROAD

New Ramp C
Open to Traffic

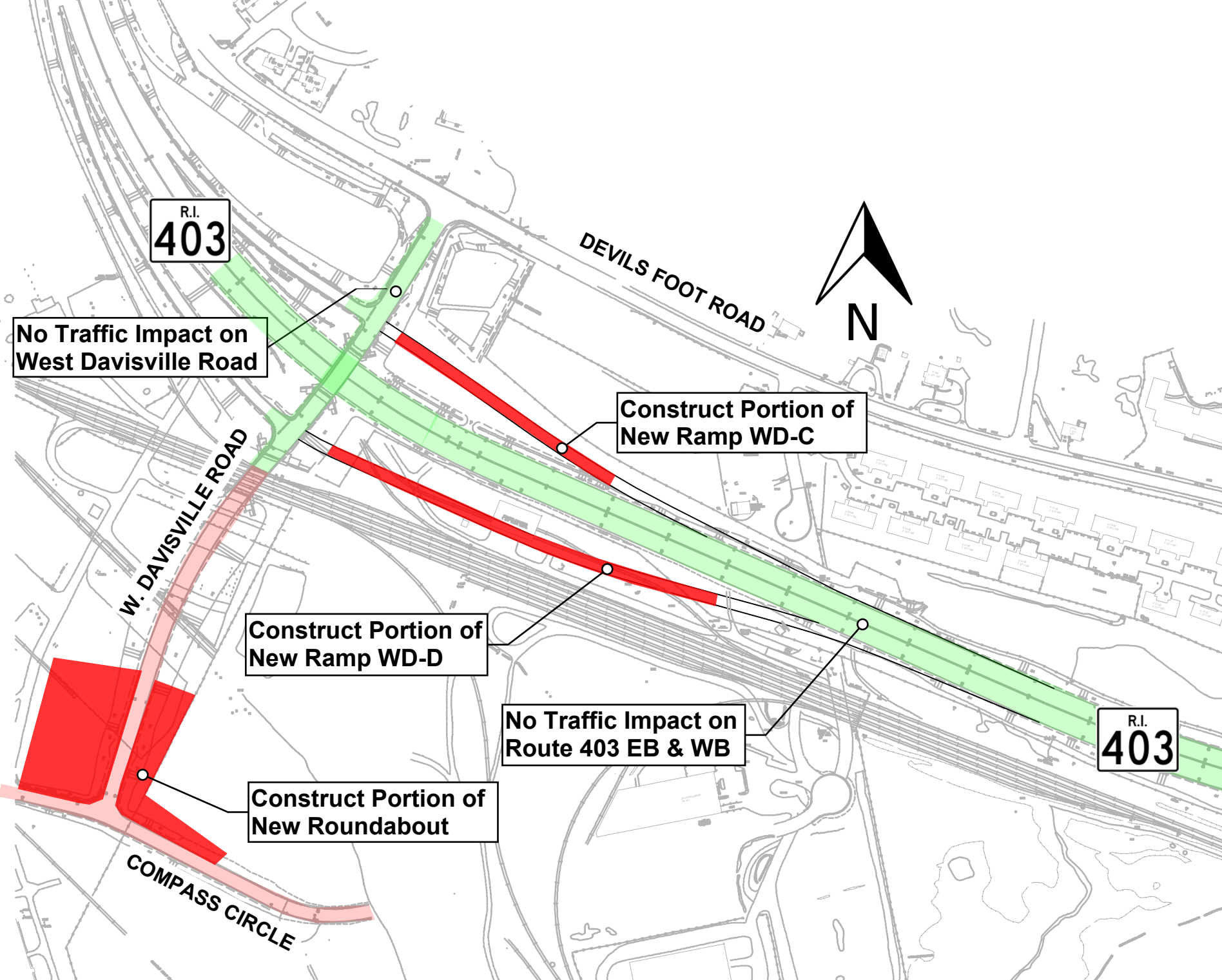
Complete Milling, Overlay
and Pavement Marking on
Route 1 Post Road NB & SB
"Night-Time Lane Closure"

R.I.
403

Complete Milling, Overlay
and Pavement Marking on
Route 403 EB & WB
"Night-Time Lane Closure"

GATE ROAD

PHASE 3



R.I.
403

**No Traffic Impact on
West Davisville Road**

DEVILS FOOT ROAD



**Construct Portion of
New Ramp WD-C**

W. DAVISVILLE ROAD

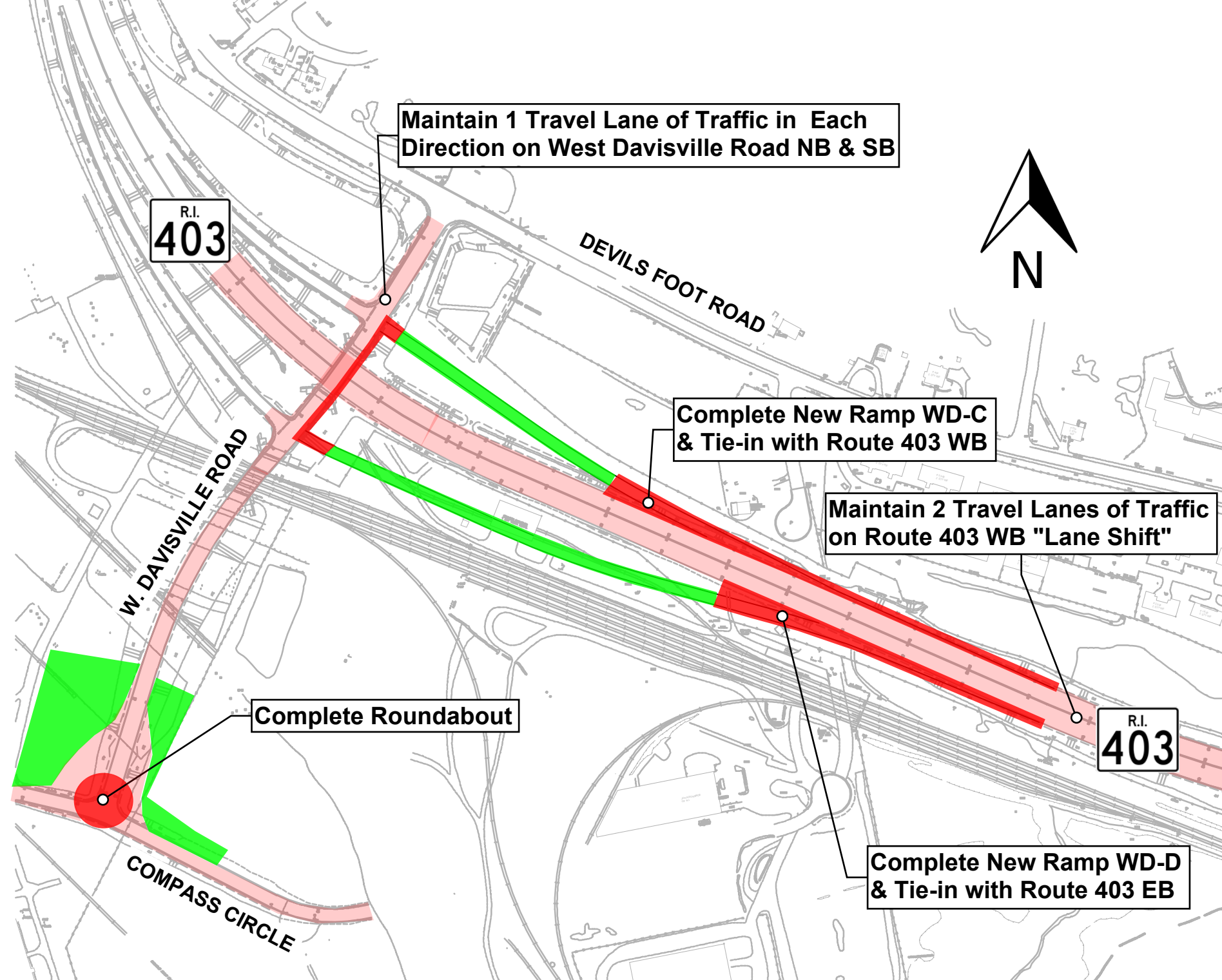
**Construct Portion of
New Ramp WD-D**

**No Traffic Impact on
Route 403 EB & WB**

**Construct Portion of
New Roundabout**

R.I.
403

COMPASS CIRCLE



Maintain 1 Travel Lane of Traffic in Each Direction on West Davisville Road NB & SB



R.I.
403

DEVILS FOOT ROAD

Complete New Ramp WD-C & Tie-in with Route 403 WB

Maintain 2 Travel Lanes of Traffic on Route 403 WB "Lane Shift"

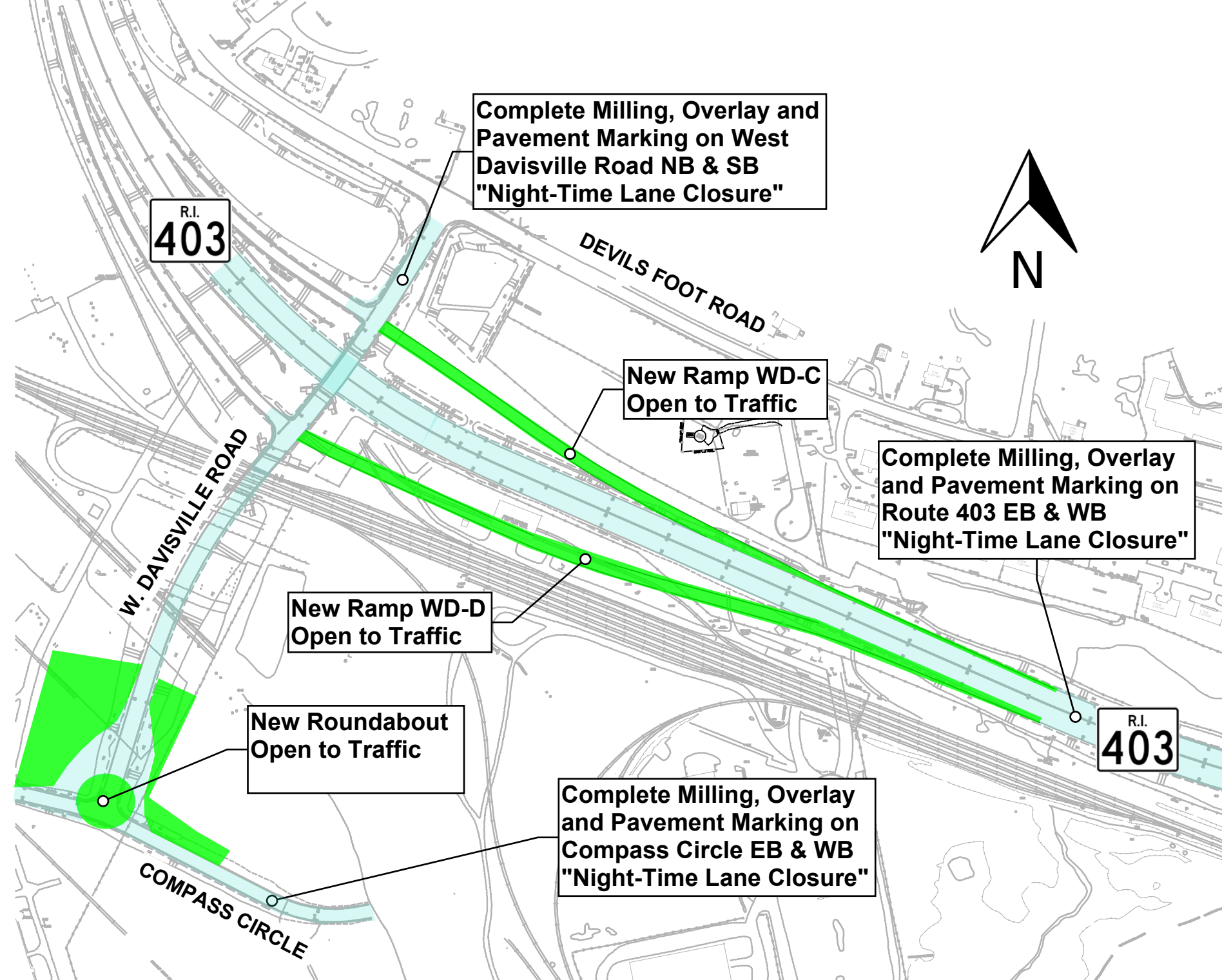
Complete Roundabout

R.I.
403

Complete New Ramp WD-D & Tie-in with Route 403 EB

W. DAVISVILLE ROAD

COMPASS CIRCLE



Complete Milling, Overlay and Pavement Marking on West Davisville Road NB & SB "Night-Time Lane Closure"

R.I.
403



DEVILS FOOT ROAD

New Ramp WD-C Open to Traffic

Complete Milling, Overlay and Pavement Marking on Route 403 EB & WB "Night-Time Lane Closure"

W. DAVISVILLE ROAD

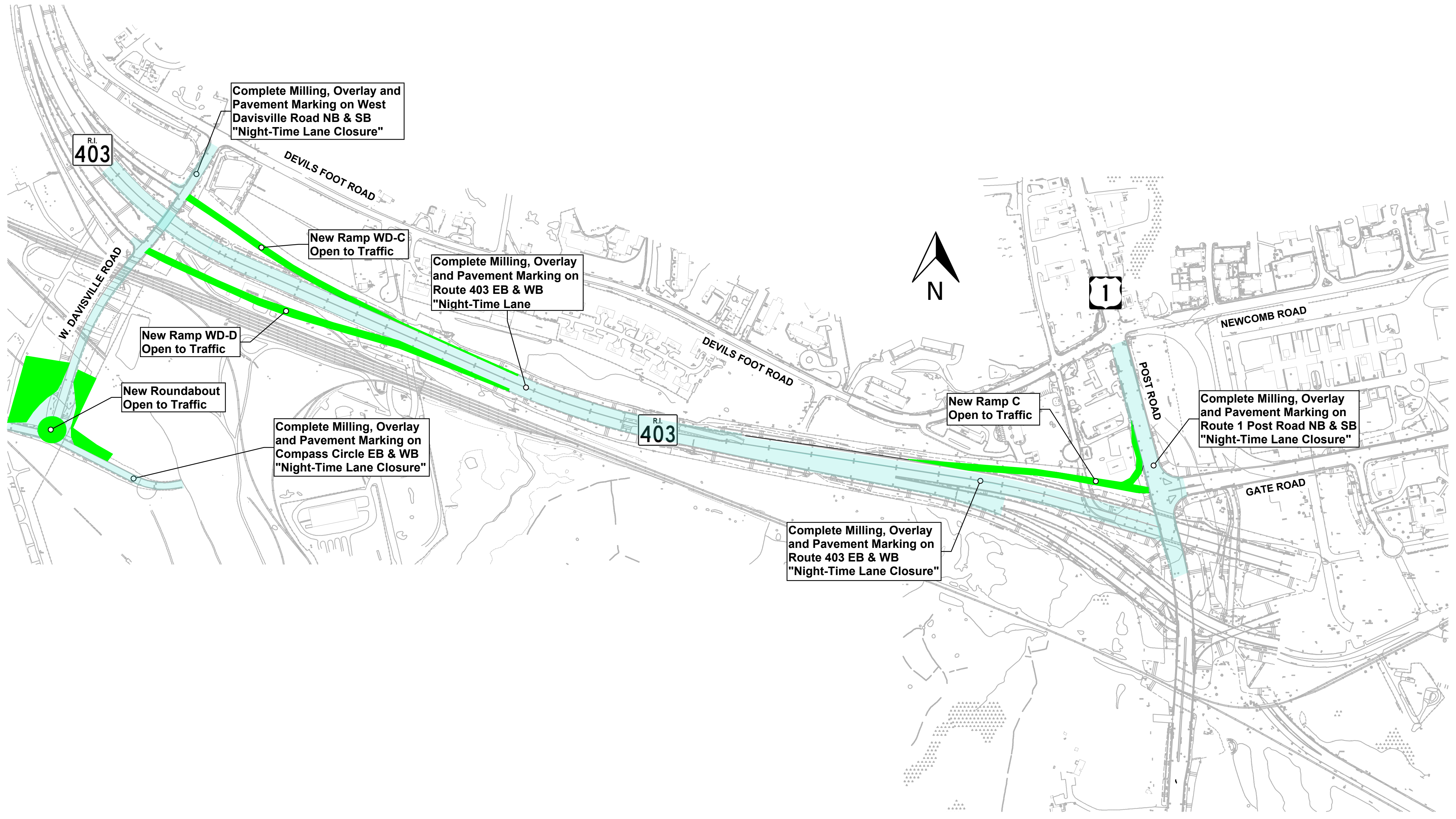
New Ramp WD-D Open to Traffic

New Roundabout Open to Traffic

R.I.
403

Complete Milling, Overlay and Pavement Marking on Compass Circle EB & WB "Night-Time Lane Closure"

COMPASS CIRCLE



Complete Milling, Overlay and Pavement Marking on West Davisville Road NB & SB
"Night-Time Lane Closure"

R.I.
403

DEVILS FOOT ROAD

New Ramp WD-C
Open to Traffic

Complete Milling, Overlay and Pavement Marking on Route 403 EB & WB
"Night-Time Lane"

New Ramp WD-D
Open to Traffic

New Roundabout
Open to Traffic

Complete Milling, Overlay and Pavement Marking on Compass Circle EB & WB
"Night-Time Lane Closure"

R.I.
403

DEVILS FOOT ROAD

N

1

New Ramp C
Open to Traffic

Complete Milling, Overlay and Pavement Marking on Route 1 Post Road NB & SB
"Night-Time Lane Closure"

POST ROAD

NEWCOMB ROAD

Complete Milling, Overlay and Pavement Marking on Route 403 EB & WB
"Night-Time Lane Closure"

GATE ROAD